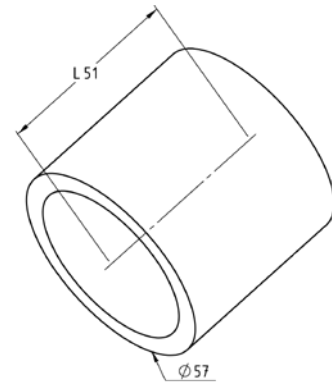


# SONOSCALE AS50

Order number: 100010210

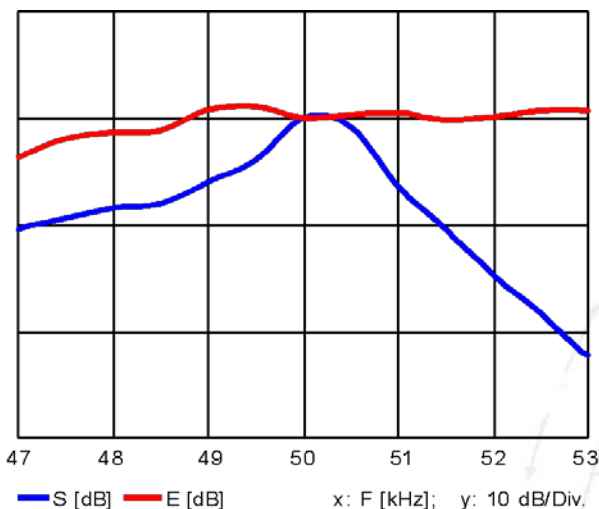
## Technical Data:

Operating frequency:	50 kHz $\pm$ 4 %
Beam width (-3 dB):	12° $\pm$ 2°
Max. driving voltage at 2 % duty cycle tone burst:	1500 V <sub>pp</sub>
Min. transmit sensitivity at optimal transmit frequency:	106 dB re 1 $\mu$ Pa/V at 1 m
Min. receive sensitivity at optimal receive frequency:	-162 dB re 1 V/ $\mu$ Pa
Capacitance (1 kHz):	4700 $\pm$ 500 pF
Weight:	130 g
Operating temperature:	-40 to +90 °C
Housing:	POM
Acoustic window:	filled epoxy

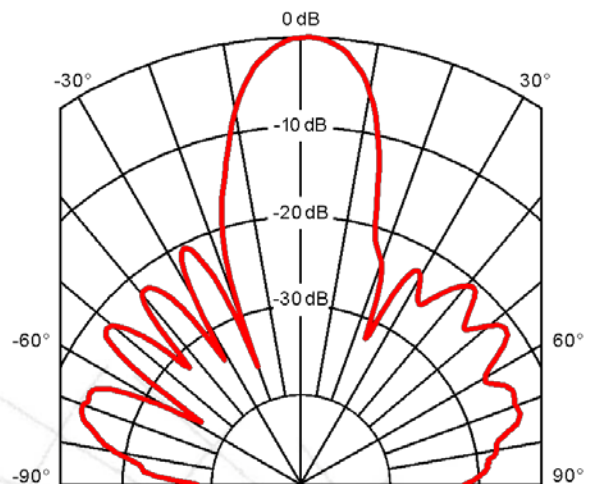


*Technical specifications may be changed by SONOTEC without further notice.*

## Transmit and Receive Voltage Response:



## Directivity Pattern:



SONOTEC 

SONOTEC Ultraschallsensorik Halle GmbH  
 Nauendorfer Straße 2, 06112 Halle an der Saale  
 www.sonotec.de

E-Mail: sonotec@sonotec.de  
 Tel.: +49 (0)345 / 1 33 17- 0  
 Fax: +49 (0)345 / 1 33 17-99